

Sold



Unit 25, 19 Hindmarsh Tce, Lightsview



Tremendous Top Floor Views of the Adelaide Hills

Penthouse level with tremendous views of the Adelaide Hills this 3 bed, 2 bath apartment with secure garaging provides a low maintenance inner urban lifestyle. Suitable for a wide demographic this property would appeal to investors, families, first home buyers or downsizers. Built in 2016 to a high standard, this apartment provides an Easterly aspect with large undercover balcony providing views of the Adelaide lights in the evening or the beautiful hills during the day.

On entry be greeted by 2.7m high ceilings, timber look boards throughout and an abundance of natural light. Built with form and function in mind, the open plan living/meals and kitchen is generous in size and perfect for entertaining. The kitchen design is impeccable, with

 3  2  1

Price SOLD
Property Type Residential
Property ID 100

Agent Details

Justine Thomson - 0438
752 683

Office Details

SA Listings
08 8271 2518

SA LISTINGS

contemporary cabinetry, ceaserstone bench-tops, glass splashback and ample storage. The kitchen includes extensive overhead and under-bench cabinetry, eliminating any storage issues with pots and pans. Quality stainless steel appliances throughout including a Fisher and Paykel gas cooktop, under-bench electric oven and dishwasher. The kitchen connects seamlessly to the meals and living area, allowing easy interaction with family and friends. If the gathering is large, open the glass sliding doors to the living and guests can enjoy the undercover terrace with magnificent views, creating a more relaxed environment.

The master bedroom, incorporates a generous space with direct connectivity to the undercover balcony, a haven for relaxation after a busy day. The master bedroom includes floor to ceiling built-in-robos and an ensuite. The ensuite is well appointed with floor to ceiling tiles, bath, shower, toilet and a good sized vanity.

Bedroom 2 and 3 both include floor to ceiling built-in-robos and Bed 2 provides an additional study nook as an added bonus. Conveniently located to bed 2 and 3 is the master bathroom, complete with floor to ceiling tiles and contemporary finishes. Completing the offering is a cleverly designed euro-laundry and large linen cupboard.

Additional features include:

- Ducted reverse cycle air-conditioning throughout
- Down-lights throughout
- Secure under garage car-parking with direct entry to the lift
- Neutral palette throughout

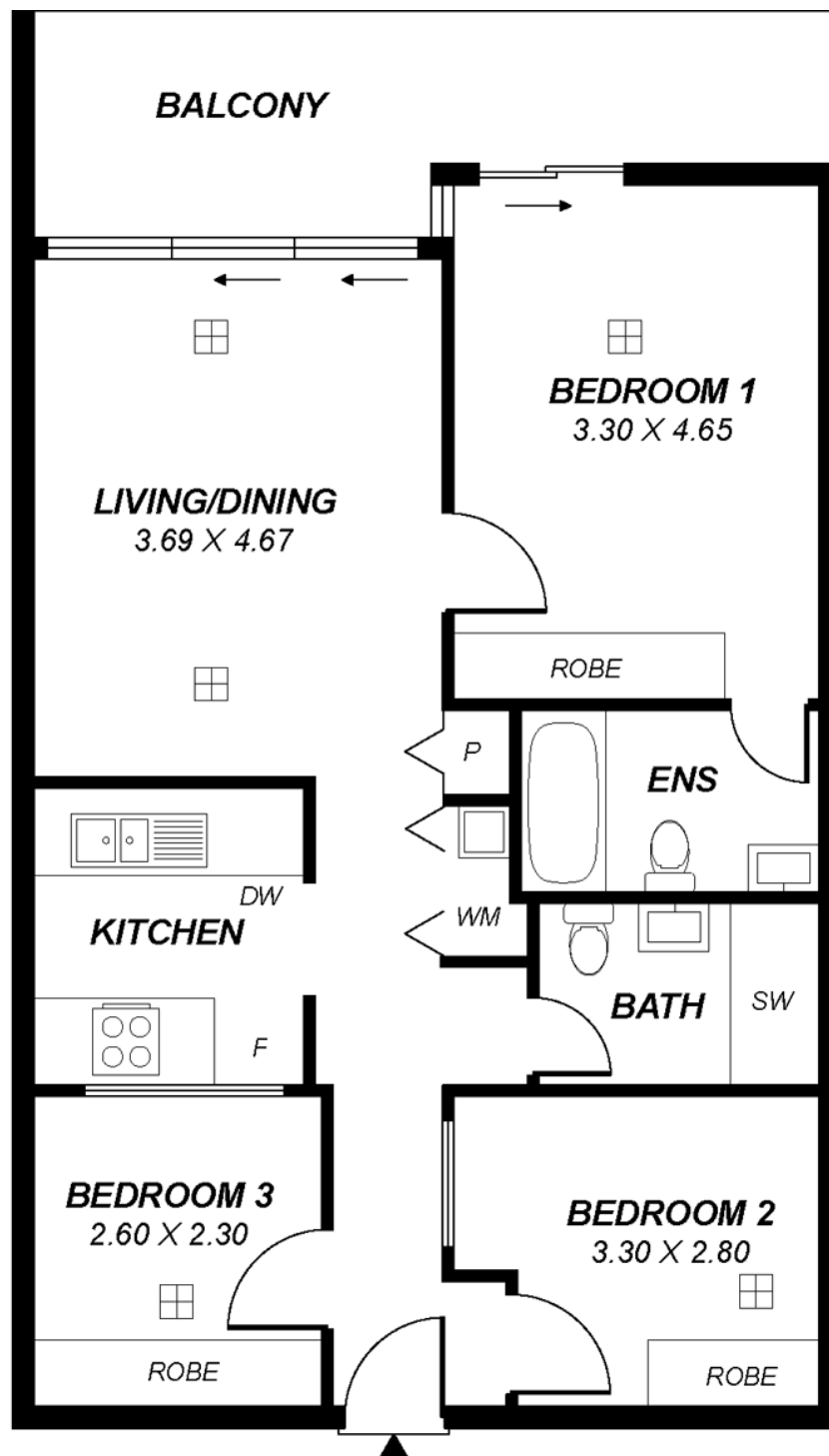
- Additional data/tv points throughout
- High security with intercom and door release

Located nearby the Lightsview tennis courts, reserve area and Waterford Lake and only 8km's to the Adelaide CBD, Lightsview is synonymous with urban living. This property is within walking distance to public transport, the Northgate shopping centre and walking trails. The community by-laws also allow for small pets, so cat and dog lovers do not be concerned! If you have been searching for low maintenance living with plenty of space, this could just be the one?

SA LISTINGS - A SIMPLE MOVE

RLA: 277113

The above information provided has been furnished to us by the vendor/s. We have not verified whether or not that information is accurate and do not have any belief in one way or the other in its accuracy. We do not accept any responsibility to any person for its accuracy and do no more than pass it on. All interested parties should make and rely upon their own inquiries in order to determine whether or not this information is in fact accurate.



*This drawing is for illustration purposes only.
All measurements are approximate and details intended
to be relied upon should be independently verified.*

| Area | m ² |
|--------------|----------------|
| Living | 83.14 |
| Balcony | 12.85 |
| Total | 95.99 |