

Sold

13, 30 Light Terrace, Lightsview



Brand New, Top Floor & Views

This top floor urban designed 2-bedroom apartment in vibrant Lightsview has been cleverly crafted to offer the ideal modern city lifestyle. Designed for health and well being in mind with an abundance of natural light, external windows to each bedroom and energy efficiency at the forefront, this apartment is one not to miss. If you are an investor, first home buyer or downsizer this apartment will meet all your needs. For the investor an excellent rental yield is on offer, for the first home buyer, take advantage of the first home owners grant of \$15,000 and for downsizers this is a stylish lifestyle with Adelaide hills views at an affordable price!

Comprising a sleek modern well appointed kitchen complete with electric oven and cooktop, dishwasher and an abundance of overhead and under-bench cabinetry. A

 2  1  1

Price	SOLD
Property Type	Residential
Property ID	119
Floor Area	97 m2

Agent Details

Justine Thomson - 0438
752 683

Office Details

SA Listings
08 8271 2518

SA LISTINGS

generous island bench inclusive of breakfast bar will adequately meet all your entertaining and every day needs. Designed with entertaining in mind, this apartment cleverly connects the open plan kitchen/meals and living with the outside balcony complete with Adelaide hills views. Perfect for a relaxed indoor/outdoor lifestyle.

The two generous sized bedrooms include built-in-robos, quality neutral toned carpets, ceiling fans and an abundance of natural light. The well appointed master bathroom is cleverly tucked away, yet easily accessible to the master bedroom and main living area. The euro laundry is also well planned and cleverly concealed with room for washer and dryer.

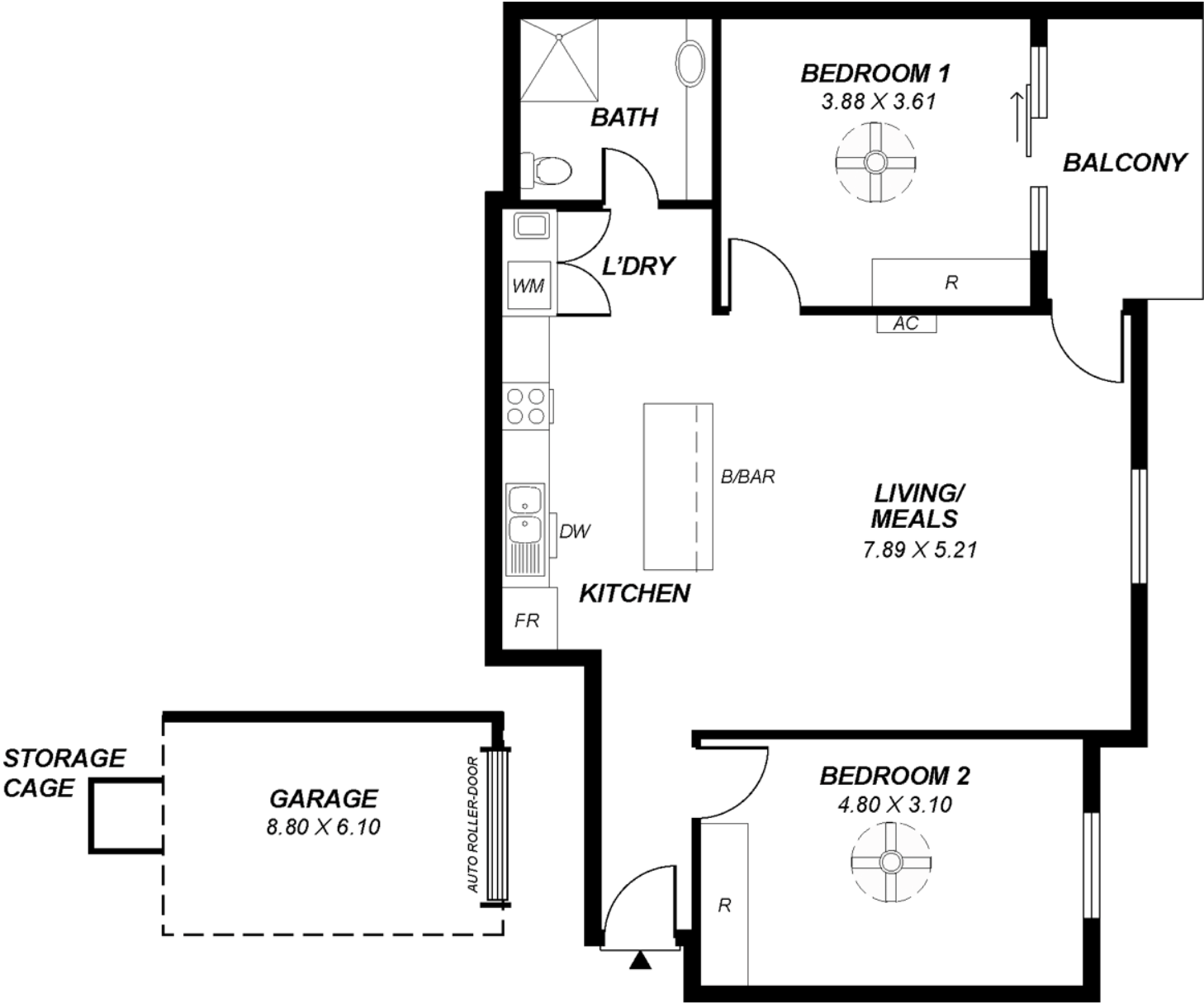
A secure garage with automated door plus a good size storage facility provides all you need for apartment living.

Additional features include:

- Split system reverse cycle air-conditioning to main living/dining & kitchen
- Ceiling fans to both bedrooms
- 3m high ceilings
- Lift access
- Quality sisal carpets to main living & bedrooms
- Contemporary tiles to kitchen, wet areas and balcony
- High security
- Optic Fibre cabling
- Flyscreens to opening windows and doors

Being in a premium location of Lightsview and located within walking distance to the Northgate shopping centre, public transport and only 8kms to the Adelaide CBD, this affordable apartment with Adelaide hills views, an impressive design and brand new, is ready and waiting its new owner!

The above information provided has been furnished to us by the vendor/s. We have not verified whether or not that information is accurate and do not have any belief in one way or the other in its accuracy. We do not accept any responsibility to any person for its accuracy and do no more than pass it on. All interested parties should make and rely upon their own inquiries in order to determine whether or not this information is in fact accurate.



*This drawing is for illustration purposes only.
All measurements are approximate and details intended
to be relied upon should be independently verified.*

Area	m ²
Living	90.38
Balcony	8.13
Total	98.51