

Sold



Unit 2, 40 Halsbury Ave, Kingswood



Kingswood - Low Maintenance Living

Located in sought after Kingswood this 2-bedroom apartment in a small group of seven in leafy Halsbury Avenue will suit first home buyers, investors or downsizers. Perfectly situated in a quiet no-through road surrounded by quality housing, this well-kept 2-bedroom unit with courtyard and carpark provides for easy care low maintenance living.

On entry be greeted by a feeling of spaciousness with polished pine timber boards throughout and a good size open plan living zone. The renovations have all been completed, with an updated kitchen and bathroom in neutral tones. The kitchen provides ample cabinetry including a large pantry and overhead cupboards plus quality appliances.

 2  1  1

Price SOLD
Property Type Residential
Property ID 168

Agent Details

Justine Thomson - 0438
752 683

Office Details

SA Listings
08 8271 2518

SA LISTINGS

The master bedroom, inclusive of built-in-robe and ceiling fan, is generous in size and can easily accommodate a king size bed with room for a study. Bed two is also well proportioned and includes a built-in-robe and ceiling fan.

Additional features include:

- Split system reverse cycle air-conditioning
- Gas cook-top
- Electric oven
- Down-lights
- White timber venetian blinds
- Front and rear security doors
- Neutral tones throughout
- Laundry

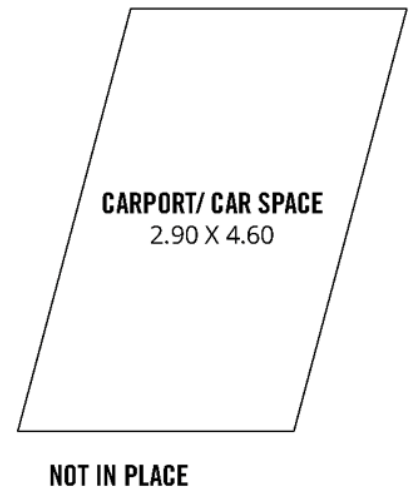
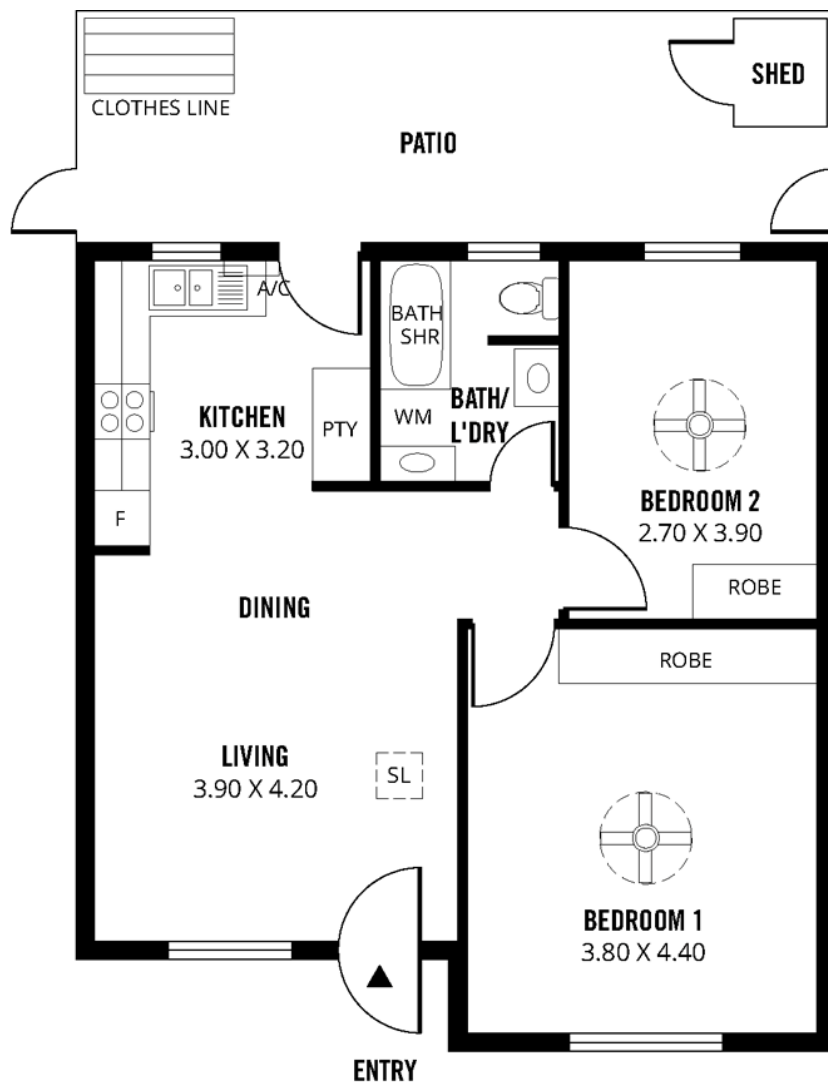
To complete the offer, a single undercover car-park and rear courtyard with utility shed is included.

Located in a beautiful tree-lined avenue of Kingswood surrounded by quality schools including Highgate Primary, Mitcham Primary, Mitcham Girls High, Unley High and Urrbrae Agricultural High plus within walking distance to public transport and the added convenience of the Mitcham Village and Unley Shopping centre nearby, this apartment offers the convenience of inner city living at an affordable price.

SA LISTINGS - COMMISSION IMPOSSIBLE

RLA: 277113

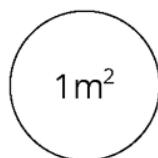
The above information provided has been furnished to us by the vendor/s. We have not verified whether or not that information is accurate and do not have any belief in one way or the other in its accuracy. We do not accept any responsibility to any person for its accuracy and do no more than pass it on. All interested parties should make and rely upon their own inquiries in order to determine whether or not this information is in fact accurate.



TOTAL



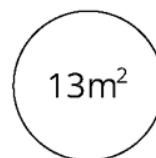
Living



Shed



Patio



Carport



Scale in metres. This drawing is for illustration purposes only. All measurements are approximate and details intended to be relied upon should be independently verified.

Produced by **The Fotobase Group**