



17 Harper Cct, Lightsview



Designer Display Home and Brand New

This newly built terrace display home by Gallery Living with designer finishes comprises 3 bedrooms, 2 living zones, 2 bathrooms, single garage plus ability to park second car off the street. This home will be highly sought after and first home buyers take note: the \$15,000 First Home Owners Grant applies to those eligible.

This urban design provides an abundance of light, ample space and a natural flow for everyday living. On entry be greeted by high ceilings and beautiful oak timber look boards. The hub of the home is the open plan meals/living and galley designed kitchen with direct connectivity to the central and rear courtyard via double glass sliding doors. The kitchen incorporates the very best in design with a large island bench that doubles as a breakfast bar,

3 2 1

151 m²

Price	SOLD
Property Type	Residential
Property ID	82
Land Area	151 m²
Floor Area	202 m²

Agent Details

Justine Thomson - 0438 752 683

Office Details

SA Listings
08 8271 2518

SA LISTINGS

quality appliances including gas cooktop, electric oven and stainless steel dishwasher. Ample overhead and under-bench cabinetry caters for all your storage needs, including cabinets to hide everyday appliances. Adjacent the kitchen is the stunning meals area, incorporating designer timber feature wall and built-in bench seating. The meals area can comfortably accommodate a table for 10 and features a lowered ceiling and stunning pendant light to create an intimate dining space. The living zone is generous in size and includes quality carpet surrounded by oak flooring to create warmth and texture within the space. The designer touches add immensely to the appeal of this home, including a cleverly concealed euro laundry off the hallway and beautifully constructed shelving and additional storage adjacent.

The upper level incorporates a second living zone, large study or media room. This area could easily accommodate a home office and includes a significant built-in bench-top plus feature shelving and two double built-in cupboards. The master wing, located privately to the front of the home, includes a well appointed ensuite, built-in-robies and glass sliding doors leading to the outside balcony. To the rear of the upper level is the two minor bedrooms complete with built-in-robies. Located adjacent the minor bedrooms is the master bathroom complete with generous shower incorporating feature wall tiling and quality porcelain floor tiles. For the added convenience of everyday family living, a separate powder room and separate toilet completes the offer.

Additional features include:

- Ducted reverse cycle heating and cooling throughout
- Security system
- Quality contemporary carpets to stairs, bedrooms and

upper living

- Quality porcelain tiles to wet areas
- Down-lights and feature pendant lighting throughout
- 2.7 metre ceilings with square set cornices
- Insulation to ceiling, internal walls and external walls

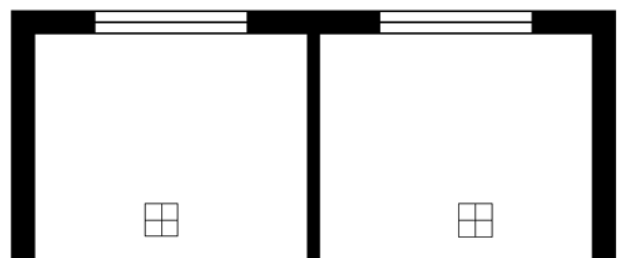
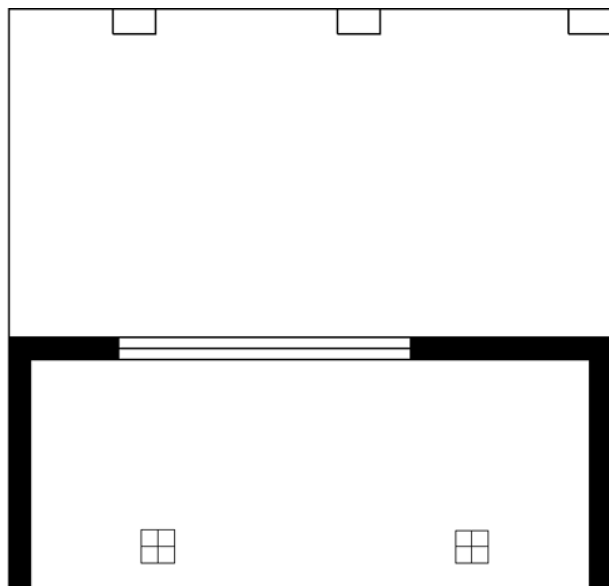
This urban terrace with designer finishes will appeal to those who are looking for inner city low maintenance living at an affordable price. Located only 8km's to the Adelaide CBD within coveted Lightsvue, with a choice of cafes, reserves, lakes, shopping and public transport at your doorstep, this brand new designer display home is ready and waiting to be lived in.

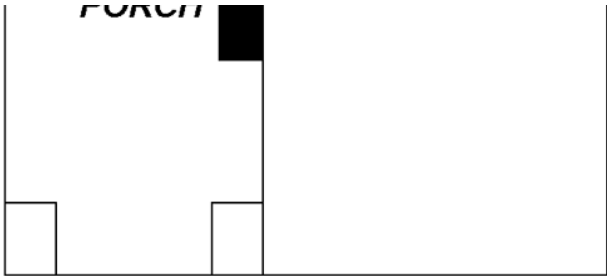
SA LISTINGS - A SIMPLE MOVE

RLA: 277113

Property Code: 82

The above information provided has been furnished to us by the vendor/s. We have not verified whether or not that information is accurate and do not have any belief in one way or the other in its accuracy. We do not accept any responsibility to any person for its accuracy and do no more than pass it on. All interested parties should make and rely upon their own inquiries in order to determine whether or not this information is in fact accurate.





UPPER FLOOR PLAN

GROUND FLOOR PLAN

*This drawing is for illustration purposes only.
All measurements are approximate and details intended
to be relied upon should be independently verified.*

Area	m ²
Ground Floor Living	80.24
First Floor Living	93.51
Void	7.48
Garage	20.82
Porch	1.59
Balcony	5.39
Court	10.02
Total	201.55